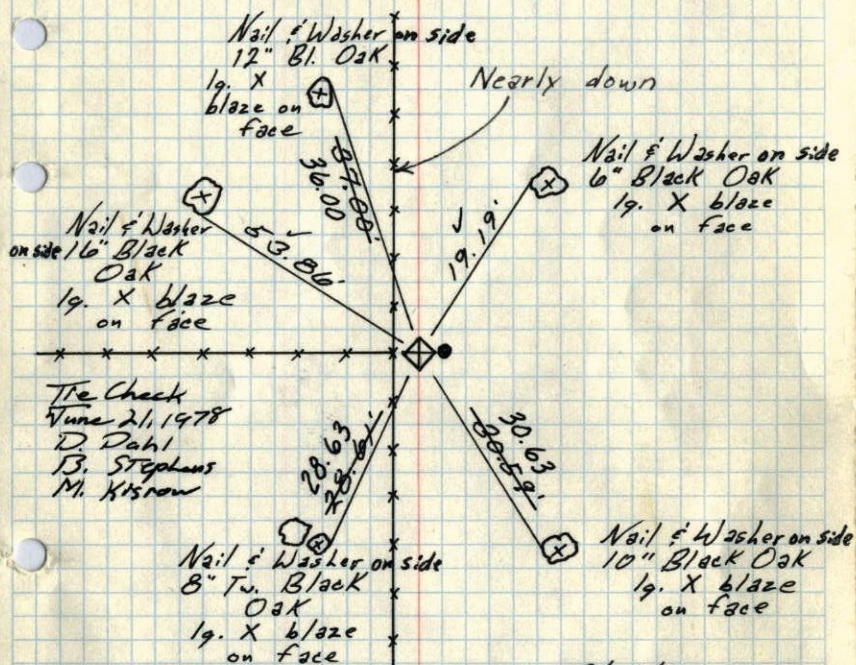


SW Cor. Sec. 30 - T32 - R23

Granite Mon. flush

Iron Pipe on East



Tie Check
June 21, 1978
D. Dahl
B. Stephens
M. Kistrow

9/13/60

Bill Rogers

Ralph Robinson

Retie 9/17/64

M. D. Anderson
G. Todd

ROLAND W. ANDERSON
COUNTY SURVEYOR
ANOKA COUNTY, MINNESOTA

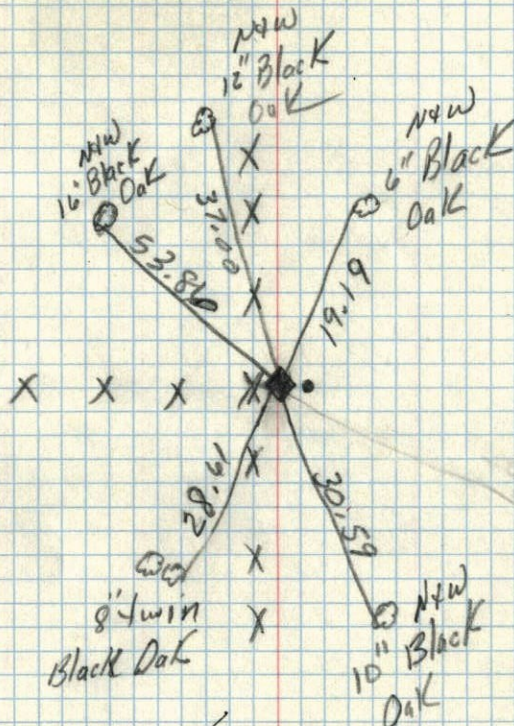
Tie Check
Aug. 11, 1966
H. Larson
D. Potter
G. Reimer

TEMPERATURE CORRECTED
AND HORIZONTALLY
TAPED MEASUREMENTS

SW Cor. Sec. 30 +32 R23

Granite stone flush

Iron Pipe on East

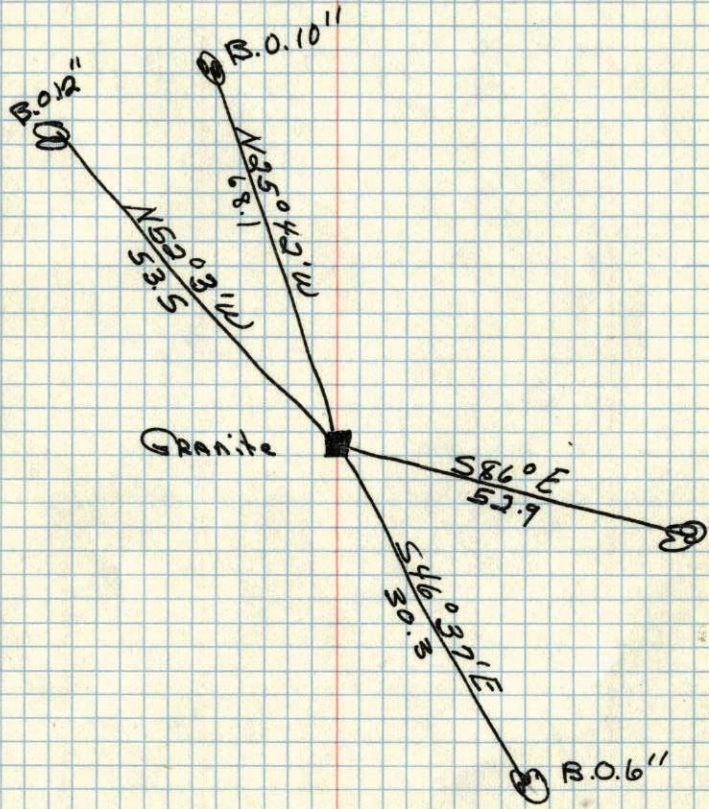


✓ 9/22/60

TC
Temp. 62
9/13/60
Bill Rogers
Ralph Robinson

SW cor. of Sec. 30, T. 32 R. 23

Granite



Oct. 27, 1943
Cartwright